

Print Inspection Station - Model QCS-2

<i>Item#</i>	<i>Part#</i>	<i>Description</i>	<i>Item#</i>	<i>Part#</i>	<i>Description</i>
1	363900	Print Inspection Station - Model QCS-2	32	363916	Bracket - Motor Controller
2	702938	Sheave - Single	33	700048	Cord Assembly - Power
3	250153	Pulley - Brake Belt	34	701318	Strain Relief - Power Cord
4	700037	Collar - Setscrew	35	702422	Bumper - 1.00 Dia. x .56 High
6	363945	Mount - Bearing Ass'y	36	700486	Tubing - Black Vinyl
7	363906	Plate - Viewing Area, End	37	702940	Spring Pin - Handle
8	700707	Ring - .50" External Retaining	38	363950	Arm - Lever
9	701228	Shim - .50 I.D. x .75 O.D. x .047 Thk.	39	702936	Bearing - Snap-in, .312 Shaft, .375 Hsg.
10	363934	Shaft - Roller, .50 Dia. x 12.50	40	363918	Hex Pin - Lever Pivot, .50 Dia.
11	150223	Flange - Paper Guide, Nylon	41	701320	Ring - .25" External Retaining
12	363937	Shaft - Supply, .625 O.D. x 15.20	42	363921	Link - Connecting
13	270144	Roller Ass'y - Paper Guide, 1.50 O.D.	43	363924	Bracket - Lever
14	363954	Washer - Anti-Spark Roller, 1.375 Dia.	44	363908	Spacer - Hinge Bracket, .119 Thk.
16	280509	Shim - .657 I.D. x 1.14 O.D. x .047 Thk.	45	363911	Shaft - Adaptor, Motor
17	363942	Flange - Paper Roll	46	702939	Belt - FHP "V", 62.00 Outside Circum.
18	363941	Support - Core Gripper Tapered	47	702937	Sheave - Double
19	363304	Expansion Tube Ass'y - Paper Core	48	700003	Bearing - Mtr. Shaft Pil. Blk., .625 I.D.
20	363302	Retainer - Core Gripper	49	363907	Bracket - Motor Shaft Bearing
21	363301	Knob - Knurled Core Gripper	50	363910	Bracket - Motor
22	700181	Knob - Index Lever	51	363979	Motor - Gear
23	363920	Lever - Shift	52	363951	Bracket - Motor Hinge
24	363952	Support - Viewing Area Paper	53	363935	Shaft - Roller, .499 Dia. x 15.00
25	363938	Bracket - Upper Roller	54	110228	Arm - Tension Roller
26	363939	Plate - Nut Holder	55	363926	Bracket - Stop Arm "L"
27	700010	Bushing - Hole, Nylon	56	363927	Bracket - Tension Roller Arm Spring
28	702687	Mount - Snap-in Cable, .25 Dia. Hole	57	363930	Guide - "V" Belt
29	363946	Frame - QCS-2	58	363947	Bracket - Belt Guide Support
30	363915	Cover - Bottom			
31	702414	Controller - Motor			

(continued)

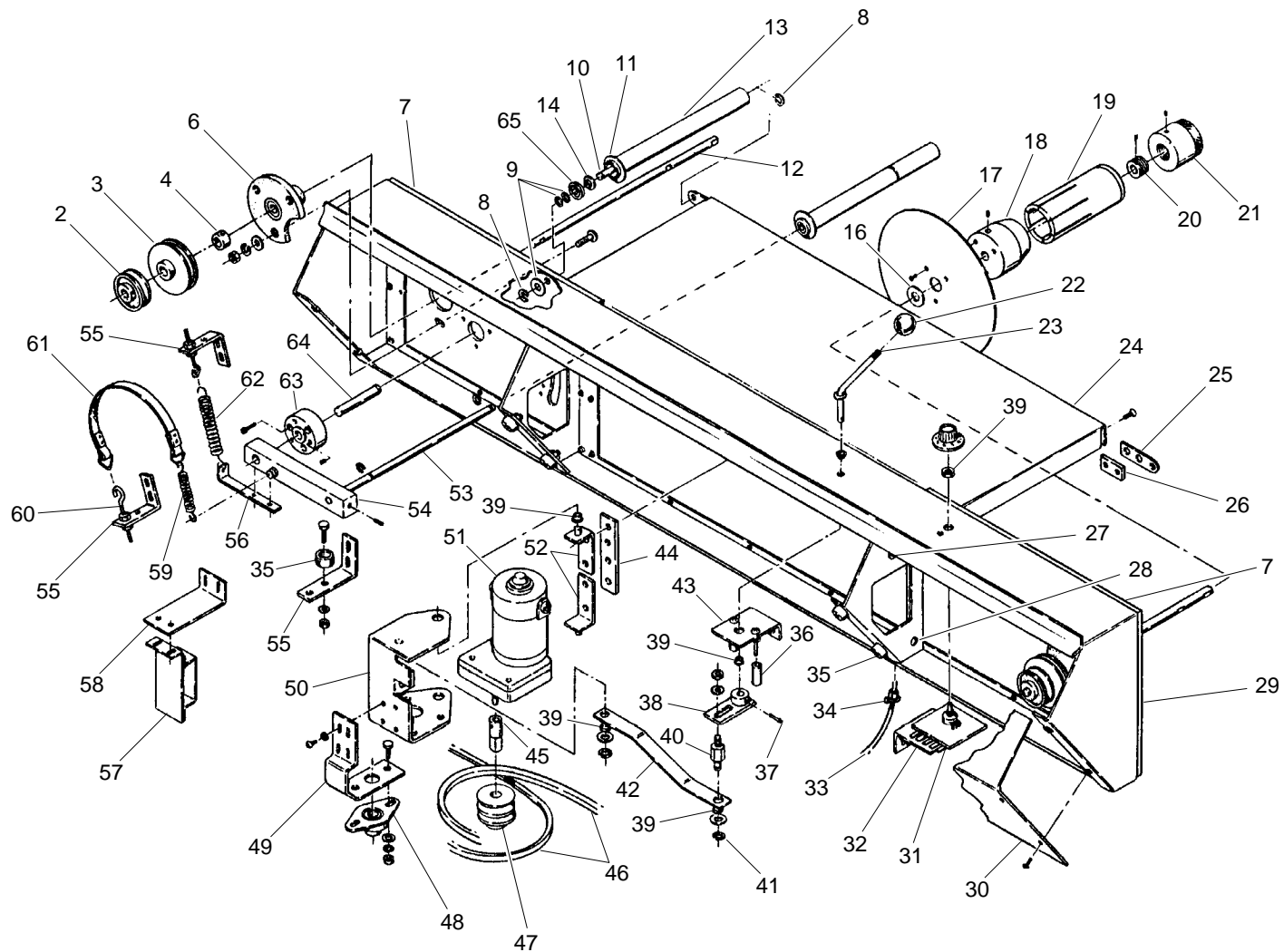


Figure 3 — Print Inspection Station - Model QCS-2

Print Inspection Station - Model QCS-2 (continued)

Item#	Part#	Description	Item#	Part#	Description
59	280338	Spring - Brake Belt Extension, .47 O.D.	—	363975	Switch Ass'y - Foot
60	700129	Eyebolt - .187 x 2 w/ Hex Nut	—	363965	Box - Foot Switch
61	363949	Belt Ass'y - Brake	—	700048	Cord - Power
62	280336	Spring - Tension Roller Ext., .47 O.D.	—	700643	Receptacle - 15 amp, 125 VAC
63	363940	Holder - Tension Arm Bearing Ass'y	—	701165	Switch - Foot
64	363933	Shaft - Tnsn. Rlr. Arm Pivot, .625 Dia.	—	701240	Switch - Toggle
65	700814	Bearing - Ball, Flange Unit	—	701313	Fuse Holder - Panel Mount
<i>The following items are not shown.</i>			—	701318	Strain Relief - Power Cord
—	363970	Light Stand Kit (Optional)	—	701712	Tape - Foam, .031 Thk. x .75 Wide
—	363960	Frame - Stand	—	702720	Fuse - 7 amp, 250 V, 3AG Type
—	363961	Shelf - Utility	—	363977	Fixture - Lamp, Ass'y
—	363973	Light Hanger - Right	—	703333	Lamp - Fluorescent, Deluxe Cool White
—	363974	Light Hanger - Left	—	703168	Leveler - Stand, 2.093 Dia. x .688 High
			—	703170	Clamp - Cord