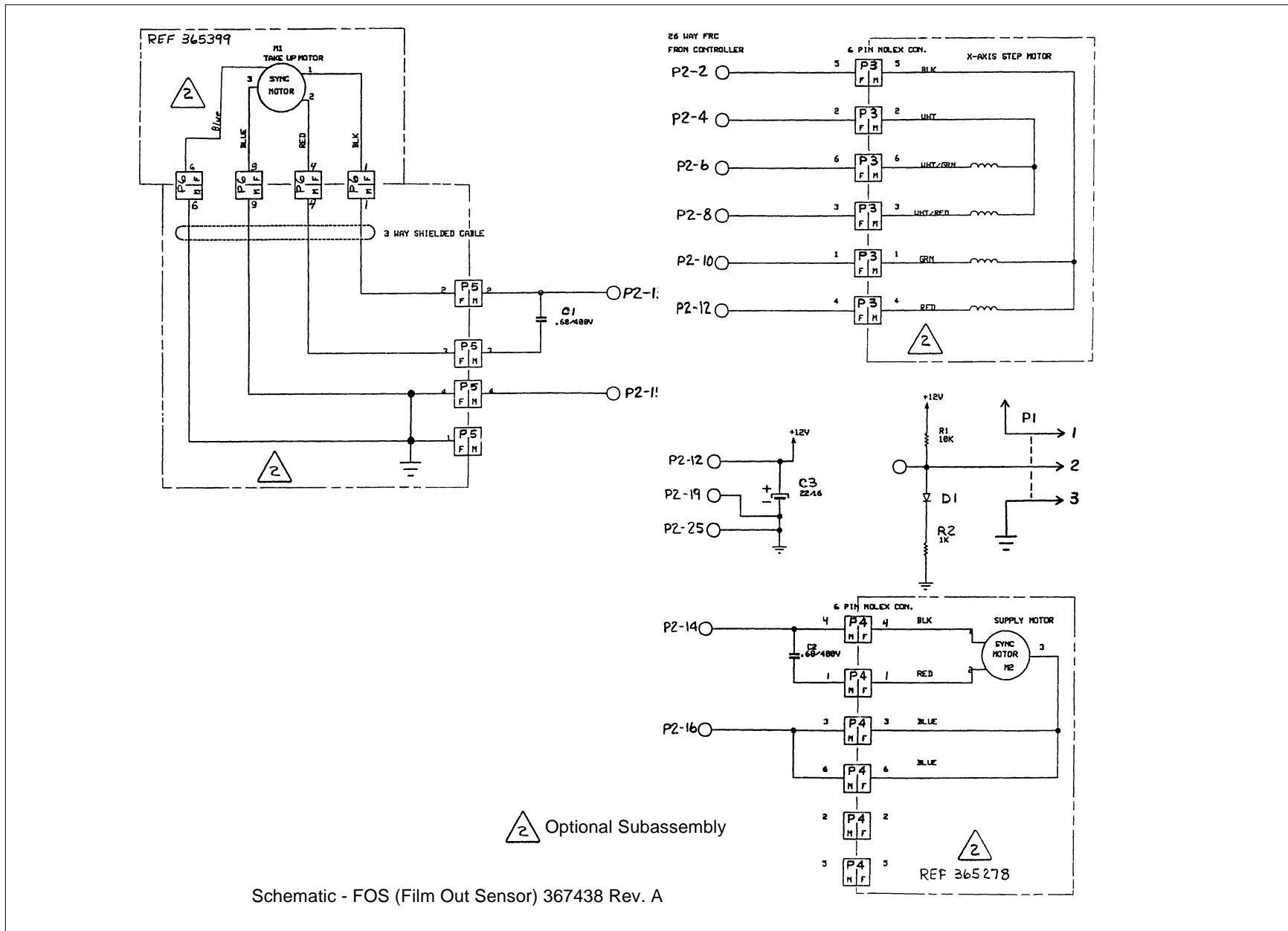


## ***Section 5 — Schematics***

---

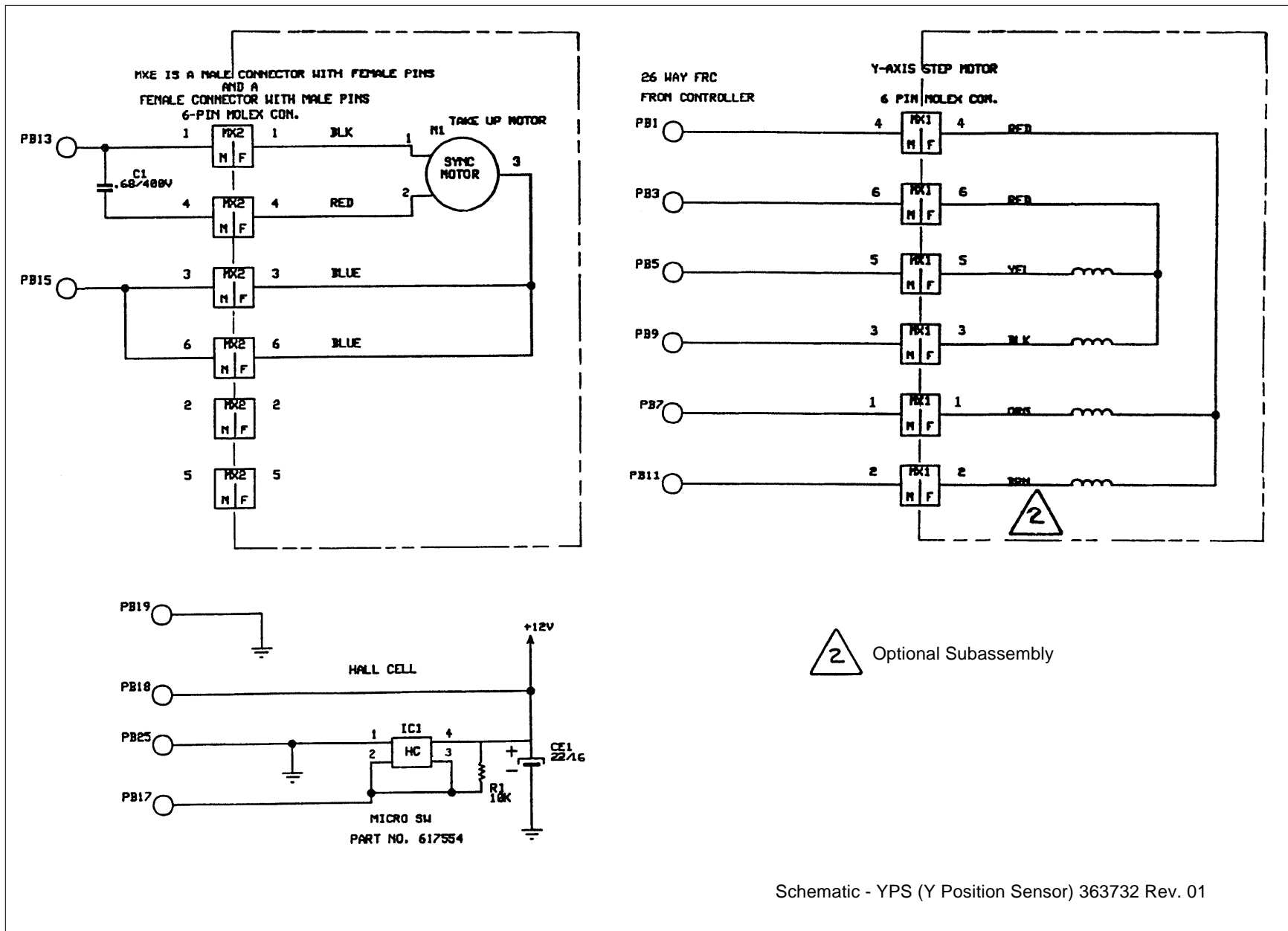
Larger copies of the schematics shown on the following pages are available from the Lucht Inc. Service Department.





Schematic - FOS (Film Out Sensor) 367438 Rev. A

Figure 9 — Schematic, FOS PCB



Schematic - YPS (Y Position Sensor) 363732 Rev. 01

Figure 10 — Schematic, YPS PCB

***Section 6 — Parts***

---

Order parts by Lucht part number, description and quantity desired — not by item number.

**Film Advance Assembly**

<b>Item #</b>	<b>Part #</b>	<b>Description</b>	<b>Item #</b>	<b>Part #</b>	<b>Description</b>
362789 FILM ADVANCE ASSY-LSS W/S-PRTR					
2	280517	SPACER-FILM	38	374262	PLATE W/F-FRONT, LEFT
3	374665	FLANGE ASSY-SPOOL	39	374263	PLATE W/F-FRONT, RIGHT
4	280560	MOTOR ASSY-STEPPING	40	365603	PLATE W/F-GUIDE
5	150249	FLANGE-SPOOL, SLFLKG	42	365845	COVER-FILM ADV
6	374667	SHAFT-SPOOL, .25 OD, K6.34LG, STL	43	365846	COVER-FILM ADV
7	280614	SHIM-.257ID, .500 OD, .005THK	44	365844	COVER-FILM ADV
8	280615	SHIM-.257ID, .500 OD, .010THK	45	700091	SCREW-CAP, SK, 6-32X.50, BLK
9	704281	WASHER-CVD, .135ID, .245 OD, .006T, .034H	46	700084	SCREW-CAP, SKFH, 8-32X.50, BLK
10	280616	SHIM-.257ID.500 OD, .020THK	47	700108	SCREW-CAP, SKFH, 10-32X.50, BLK
12	340104	KNOB ASSY-Y CENTER	48	700128	SCREW-SHL, SK, .25DX.75L, 10-24X .38
13	363708	SPACER-PLATE	49	700321	SCREW-CAP, SKBHC, 4-40X.50, BLK
14	363709	BRACKET-SELECTOR	50	700079	SCREW-CAP, SKBHC, 6-32X.38, BLK
15	363710	SHAFT-DRIVE, .25D, 6.25L, SST	51	708217	STANDOFF-HEX, .25, 6-32THD, M/F, .625, AL
17	374350	BRACKET-ACTUATOR, Y AXIS	52	700382	WASHER-LOCK, INT, NO.8, BLK
18	374580	COVER-PCB, FOS	53	700553	SCREW-CAP, SKBHC, 6-32X.50, BLK
19	363717	COVER-PCB, YPS	54	700600	WASHER-LOCK, INT, NO.6, BLK
20	363719	ROLLER ASSY-DRIVE	55	700601	WASHER-LOCK, INT, NO.10, BLK
21	367429	SENSOR ASSY-OPTIC, FIBER, S-PRINTER	56	700605	WASHER-FLAT, NO.6, .355 OD, .06T, .159ID
22	363722	PLATE-REAR, RIGHT	57	700699	SCREW-CAP, SK, 10-32X.50, BLK
23	363723	PLATE-REAR, LEFT	58	700709	WASHER-FLAT, NO.8, BLK
24	363726	PLATE-ALIGNMENT	60	700135	WASHER-LOCK, INT, NO.4, BLK
25	367433	PCB ASSY-OPTIC, SENSOR	62	700918	RING-RETG, EXT, .25D S, .23D GRV X.029W
26	363731	PCB ASSY-YPS (Y POSITION SENSOR)	63	210270	LABEL-ID, SM
27	365078	PIN-ALIGNER	65	700331	SCREW-CAP, SKBHC, 6-32X.25, BLK
28	365088	GEAR-SPUR	66	701273	SCREW-SET, SK KCP, 6-32X.38, BLK
29	703348	BALL-.188D, SST	67	700325	SCREW-MCH, PPH, 8-32X.75, BLK
30	365278	MOTOR ASSY-SYNCHRONOUS	68	703607	GEAR-ANTI-BACKLASH, 32P, 3.0PD, 96T, .25
31	365399	MOTOR ASSY-SYNCHRONOUS	69	701488	ADHESIVE-SEALANT, THD LKG, MED STR
34	369443	MOTOR ASSY-Y AXIS, LONG TRAVEL	70	701491	BRG-BALL, FLGED, .25ID, .50 OD, .218W
36	365589	COVER-GEAR	71	700347	SCREW-SET, SK KCP, 6-32X.19, BLK
37	365591	PLATE W/F-GUIDE	72	701600	GEAR-SPUR, 24PITCH, .75PD, 18T, SST
			75	701613	SPRING-COMP, .026WD, .36 OD, .50FL
			79	702020	WASHER-FLAT, NO.4, BLK

Continued

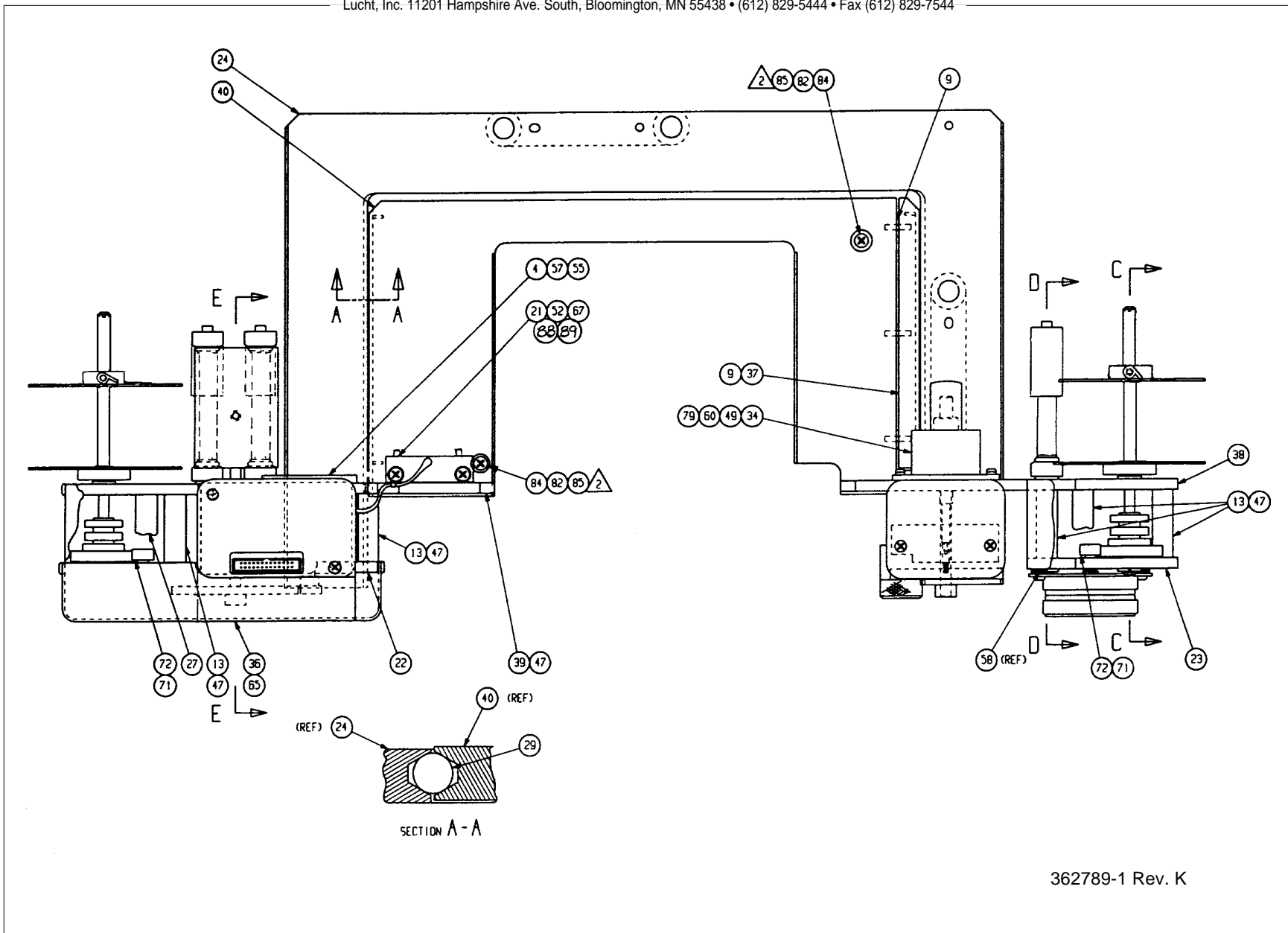


Figure 11 — Film Advance Assembly (1 of 2)

**Film Advance Assembly (cont'd)**

---

<b>Item #</b>	<b>Part #</b>	<b>Description</b>
80	704454	CLUTCH
82	701101	WASHER-FLT, .141ID, .375 OD, .062T, NYLON
83	704447	PLYWOOD-32X14X.375
84	701162	SCREW-CAP, SKFH, 6-32X1.00, BLK
85	700589	NUT-HEX, STD, 6-32, BLK
88	374273	SHIM-SENSOR, RT, AFA
89	374274	SHIM-SENSOR, LT, AFA
90	702526	SCREW-MCH, PFH, 4-40X.25, UNDERCUT
91	700926	O RING-.25ID, .062XSECT
92	375273	CAP-END, GUIDE, ROLLER
93	375265	SHAFT-ROLLER, GUIDE, .25 OD, 6.00 LG
94	375269	ROLLER-GUIDE, 70MM, PVAC/S PTR
95	375266	ROLLER-GUIDE, 35MM, S PTR
96	375267	ROLLER-GUIDE, 46MM, S PTR
97	375268	ROLLER-GUIDE, 62MM, S PTR
98	375315	BRACKET, FIBER OPTIC-SHIPPING
99	375316	BRACKET, SHIPPING
100	500177	INSTRUCTION-SHIPPING BRKTS, LSS FA

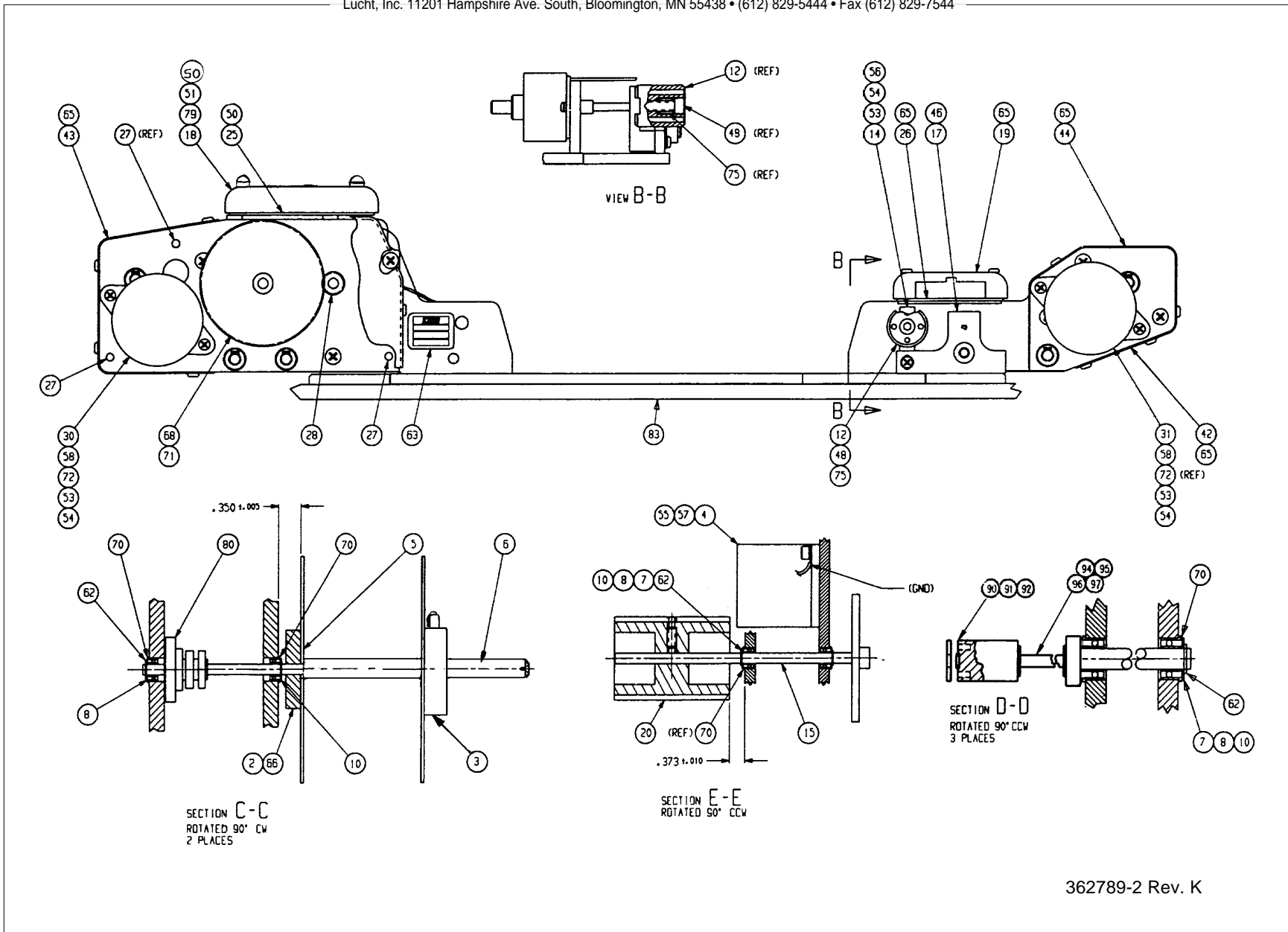


Figure 12 — Film Advance Assembly (2 of 2)