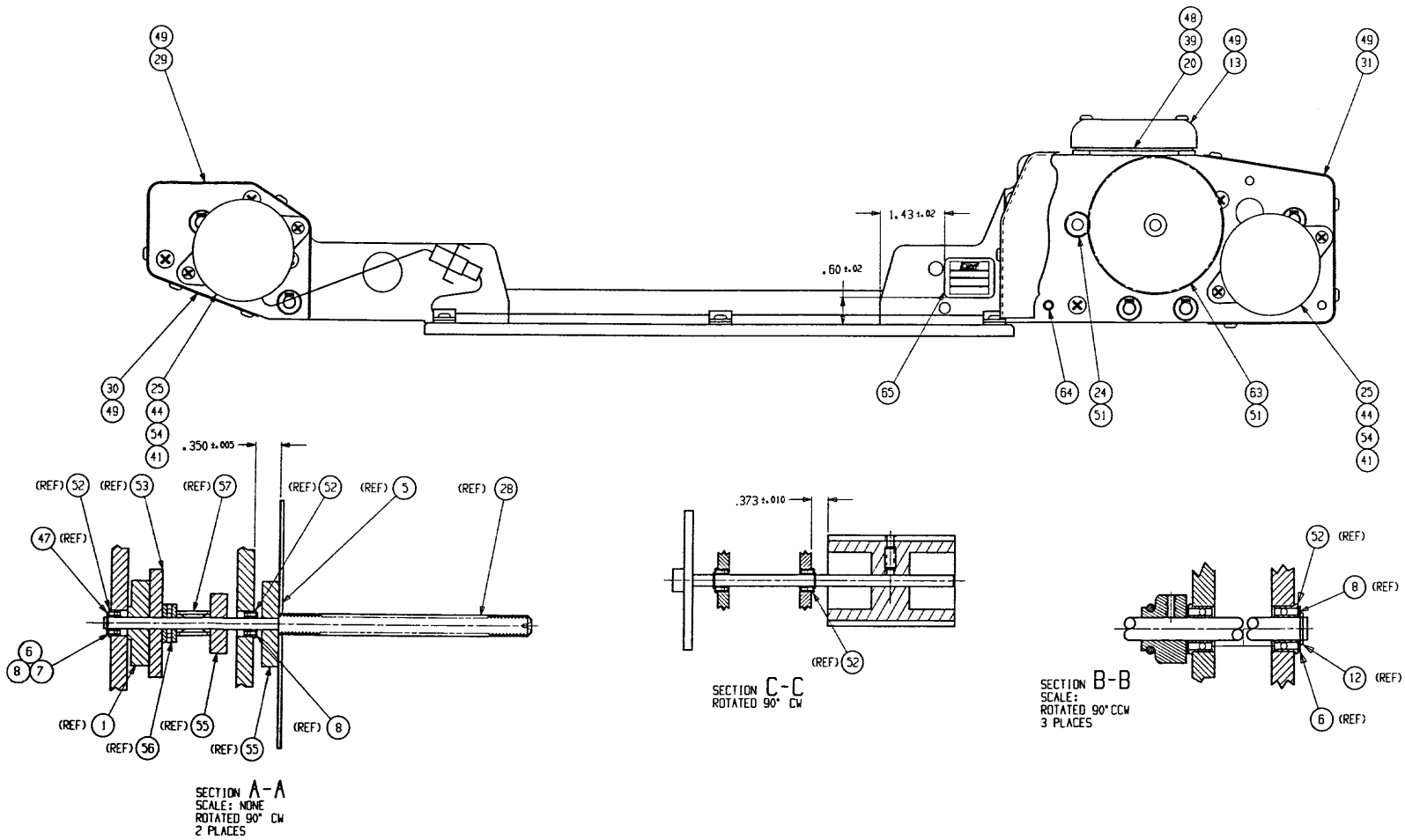


Auto Film Drive Assembly for PVAC Analyzer (1 of 2)

**Auto Film Drive Assembly for PVAC Analyzer (2 of 2)**



## ASSEMBLY PARTS LIST

ASSEMBLY NUMBER	DWG SIZE	REV	ECO NO.	DESCRIPTION	SHEET OF	
364927	01	D		FILM ADVANCE ASSY-PVAC	1	3

ITEM	PART NO.	QTY	UM	DESCRIPTION
1	120415	3	EA	CLUTCH-SPOOL
2	280517	2	EA	SPACER-FILM
3	364958	1	EA	COVER-GEAR
4	280560	1	EA	MOTOR ASSY-STEPPING
5	280587	2	EA	FLANGE-SPOOL
6	280614	AR	EA	SHIM, .257 ID X .500 OD X .005 THK
7	280615	AR	EA	SHIM, .257 ID X .500 OD X .101 THK
8	280616	AR	EA	SHIM, .257 ID X .500 OD X .020 THK
9	320218	2	EA	WASHER, .375 ID X 1.250 OD X .30 THK
10	363708	6	EA	SPACER-PLATE
11	363710	1	EA	SHAFT-DRIVER
12	363711	3	EA	SHAFT-IDLER
13	363716	1	EA	PCB COVER-XDS
14	363719	1	EA	DRIVER ROLLER ASSY
15	363720	1	EA	BLOCK-AIR SENSOR
16	365592	1	EA	PLATE W/F-FRONT, LT
17	365593	1	EA	PLATE W/F-FRONT
18	363722	1	EA	PLATE-REAR, RIGHT
19	363723	1	EA	PLATE-REAR, LEFT
20	363728	1	EA	PCB ASSY-XDS
21	364960	1	EA	PLATE-RETAINER
22	364961	1	EA	PLATE-GUIDE

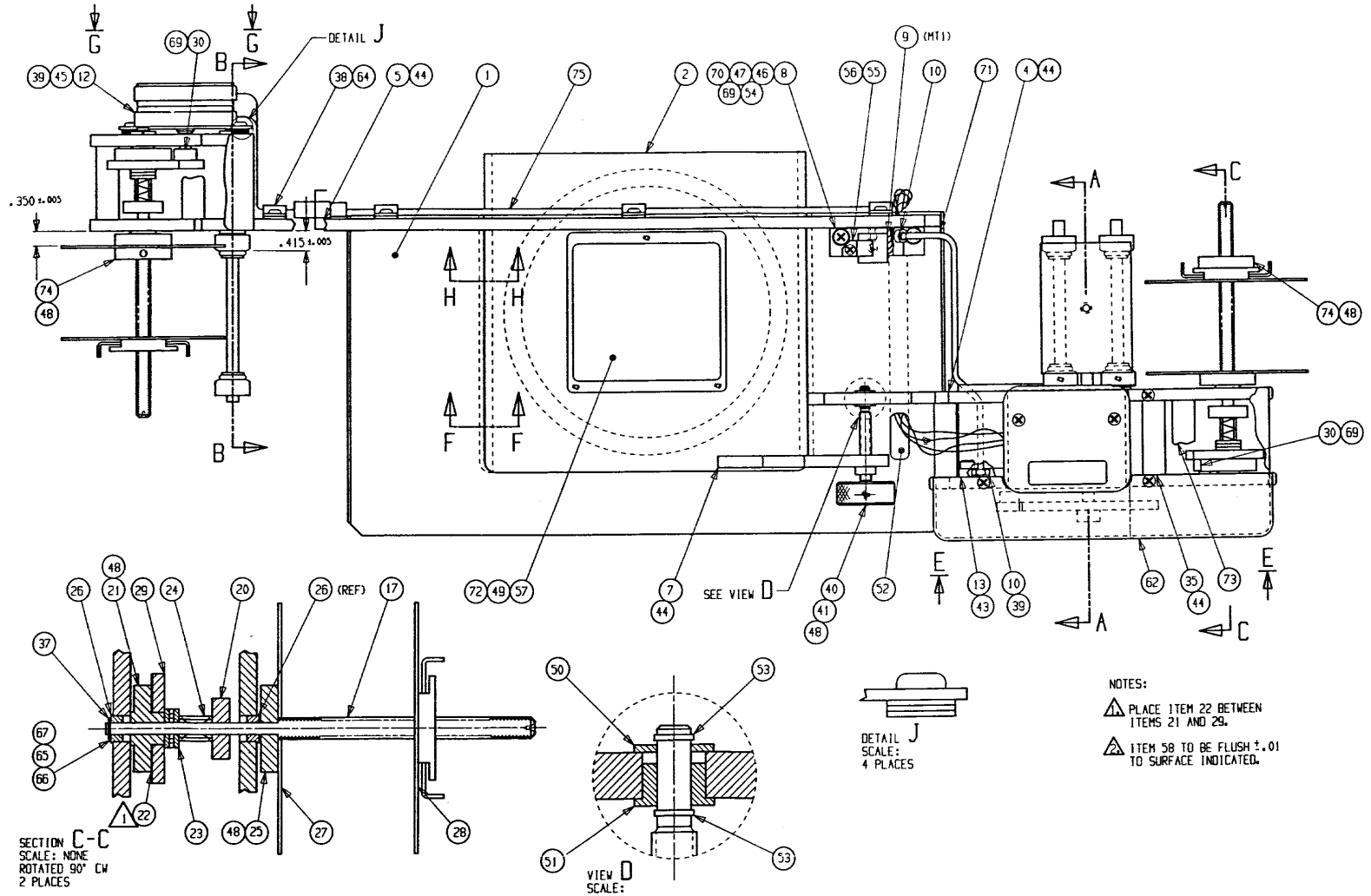
## ASSEMBLY PARTS LIST

ASSEMBLY NUMBER	DWG SIZE	REV	ECO NO.	DESCRIPTION	SHEET OF	
364927	01	D		FILM ADVANCE ASSY-PVAC	2	3

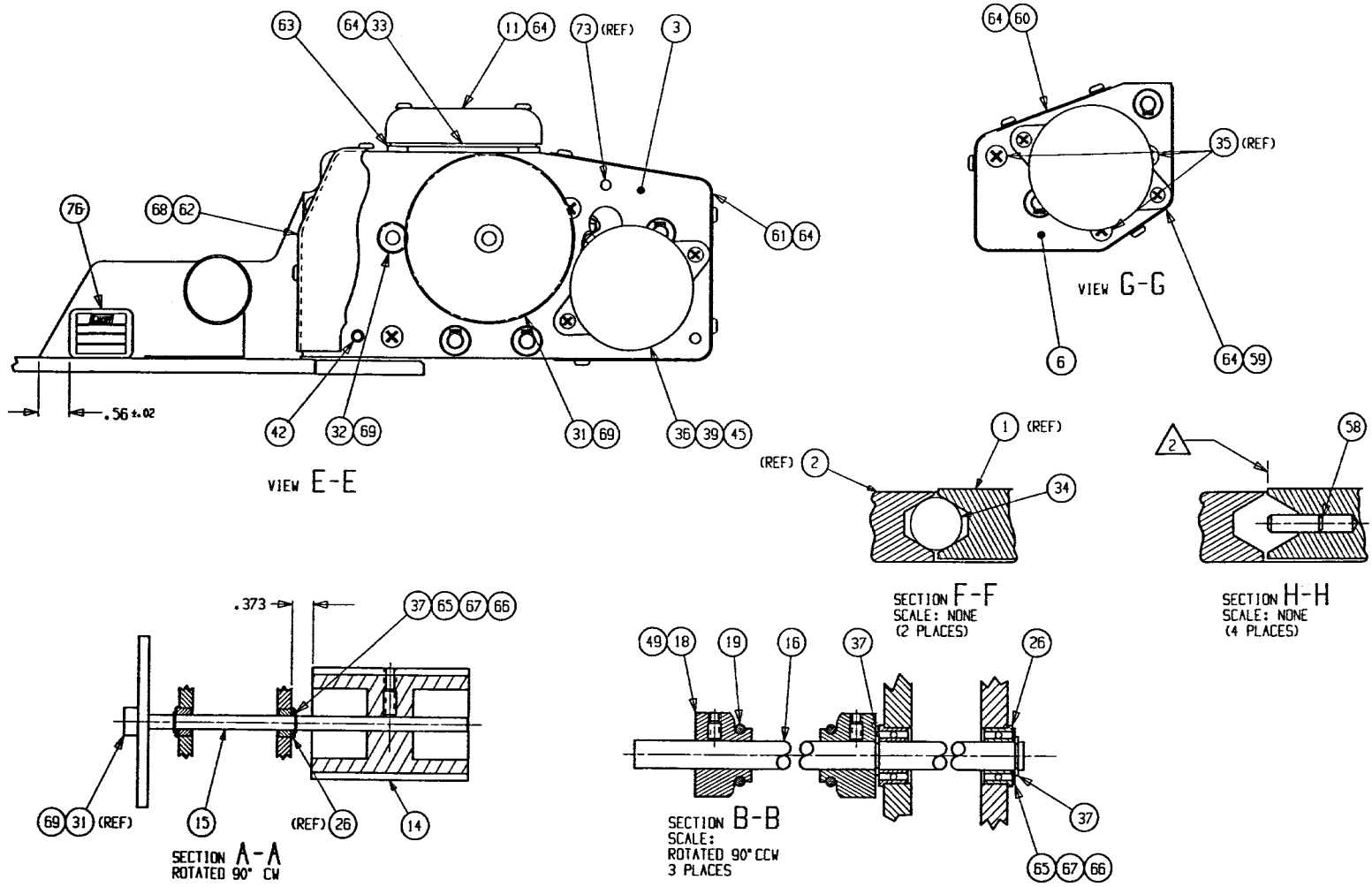
  

ITEM	PART NO.	QTY	UM	DESCRIPTION
23	365078	2	EA	PIN-SPACER
24	365088	1	EA	SPUR GEAR
25	365399	2	EA	MOTOR ASSY-SYNCHRONOUS
26	365555	6	EA	ROLLER-FILM GUIDE
27	365558	1	EA	RETAINER-SENSOR
28	365819	2	EA	SHAFT-SPOOL
29	365844	1	EA	COVER-FILM ADV
30	365845	1	EA	COVER-FILM ADV
31	365846	1	EA	COVER-FILM ADV
32	700601	4	EA	WASHER-LOCK, INT, NO.10
33	365402	1	EA	SENSOR ASSY-AIR
34	365928	2	EA	PAD-PROTECTOR
35	365939	1	EA	WIRE HARNESS-SYNCHRONOUS MTR
36	700068	1	EA	SCREW-MCH, PPH, 4-40 X .25, BLK
37	700072	1	EA	SCREW-MCH, PPH, 8-32 X .375, BLK
38	700106	4	EA	SCREW-MCH, PFH, 6-32 X .25, BLK
39	700323	4	EA	SCREW-MCH, PPH, 6-32 X .375, BLK
40	700347	1	EA	SCREW-SET, SK, 6-32 X .375, BLK
41	700547	4	EA	SCREW-MCH, PPH, 6-32 X .500, BLK
42	700325	1	EA	SCREW-MCH, PPH, 8-32 X .75L, BLK
43	700699	4	EA	SCREW-CAP, SK, 10-32 X .50, BLK
44	700709	13	EA	WASHER-FLAT, NO.8, BLK

Auto Film Drive Assembly for CIVIS Analyzer (1 of 2)



Auto Film Drive Assembly for CIVIS Analyzer (2 of 2)



## ASSEMBLY PARTS LIST

ASSEMBLY NUMBER	DWG SIZE	REV	ECO NO.	DESCRIPTION	SHEET OF
365927	01	D		FILM ADVANCE ASSY-CVIS	1 4

ITEM	Part No.	Qty	UM	DESCRIPTION
1	364936	1	EA	PLATE-GUIDE
2	364937	1	EA	PLATE-BASE
3	363722	1	EA	PLATE-REAR, RIGHT
4	365593	1	EA	PLATE-FRONT, RIGHT
5	364938	1	EA	PLATE-FRONT, LEFT
6	363723	1	EA	PLATE-REAR, LEFT
7	364943	1	EA	BRACKET W/F-ADJUSTMENT, Y AXIS
8	363720	1	EA	BLOCK-SENSOR, AIR
9	365927	1	EA	SENSOR ASSY-AIR
10	703131	2	EA	FITTING-BARBED, 10-32 X 1/16 TUBING
11	363716	1	EA	COVER-PCB, XDS
12	365399	1	EA	MOTOR ASSY-SYNCHRONOUS
13	280560	1	EA	MOTOR ASSY-STEPPER
14	363719	1	EA	ROLLER ASSY-DRIVER
15	363710	1	EA	SHAFT-DRIVER
16	363711	3	EA	SHAFT-IDLER
17	365819	2	EA	SHAFT-SPOOL
18	365555	6	EA	ROLLER-FILM GUIDE
19	701740	6	EA	O-RING
20	701608	2	EA	COLLAR-CLAMP, SPLIT
21	120415	2	EA	CLUTCH-SPOOL
22	320218	2	EA	WASHER-FELT

## ASSEMBLY PARTS LIST

ASSEMBLY NUMBER	DWG SIZE	REV	ECO NO.	DESCRIPTION	SHEET OF	
365927	01	D		FILM ADVANCE ASSY-CVIS	2	4

Item No.	Part No.	Qty	UM	DESCRIPTION
23	701610	2	EA	BEARING-THRUST
24	701647	2	EA	SPRING-COMPRESSION
25	280517	2	EA	SPACER-FILM
26	701491	12	EA	BEARING-BALL
27	280587	2	EA	FLANGE-SPOOL
28	280557	2	EA	FLANGE-LOCKING
29	701599	2	EA	GEAR-SPUR, HUBLESS
30	701600	2	EA	GEAR-PINION
31	703607	1	EA	GEAR-ANTI-BACKLASH
32	365088	1	EA	GEAR-SPUR
33	363728	1	EA	PCB ASSY-XDS
34	703348	32	EA	BALL, .1875 DIA SST
35	363708	6	EA	SPACER-PLATE
36	365278	1	EA	MOTOR-ASSY SYNCHRONOUS
37	700918	10	EA	RING-RETAINING, EXT
38	700856	4	EA	CLAMP-CABLE
39	700709	13	EA	WASHER-FLAT, NO. 8
40	364939	1	EA	KNOB-ADJUSTMENT, Y-AXIS
41	364940	1	EA	ROD-ADJUSTMENT, Y-AXIS
42	704401	1	EA	FITTING-AIR, 10-32 X 1/8 TUBING
43	700699	4	EA	SCREW-CAP, SH, 10-32 X .50L, BLK
44	700108	20	EA	SCREW-MCH, PFH, 10-32 X .50L, BLK

## ASSEMBLY PARTS LIST

ASSEMBLY NUMBER	DWG SIZE	REV	ECO NO.	DESCRIPTION	SHEET OF	
365927	01	D		FILM ADVANCE ASSY-CVIS	3	4

Item No.	Part No.	Qty	UM	DESCRIPTION
45	700547	4	EA	SCREW-MCH, PPH, 6-32X.50L
46	700072	1	EA	SCREW-MCH, PFH, 8-32X.38, BLK
47	702186	1	EA	SCREW-MCH, PPH, 8-32X.75, BLK
48	701273	9	EA	SCREW-SET, 4-40X.25
49	700100	9	EA	SCREW-SET, 6-32X.375
50	700708	1	EA	WASHER-FLAT, NO.10
51	703900	1	EA	BEARING-FLANGED
52	365928	1	EA	PAD-PROTECTOR
53	704400	2	EA	RING-RETAINING, EXT
54	702093	1	EA	O-RING
55	700068	1	EA	SCREW-MCH, PPH, 4-40X.25L
56	365558	1	EA	RETAINER-SENSOR
57	365925	1	EA	GLASS
58	702387	4	EA	PIN-DOWEL
59	365844	1	EA	COVER-FILM ADV
60	365845	1	EA	COVER-FILM ADV
61	365846	1	EA	COVER-FILM ADV
62	364958	1	EA	COVER-GEAR
63	701101	4	EA	WASHER-NYLON
64	701227	23	EA	SCREW-MCH, PPH, 6-32X.25L
65	280616	AR	EA	SHIM, .020
66	280615	AR	EA	SHIM, .010

